

11,000+ ACRES  
OF PUBLIC  
GREENSPACE

160 MILES OF  
TRAILS

40 MILES OF  
SUPERIOR

HIKING  
TRAIL SPANS

BACKBONE  
OF THE

20  
CI

55  
HI

RE  
TRAIL

70 K O  
GROO

TRAIL  
45 M OF

MORE  
TO SEE  
& DO



#### CHANGE OF PACE PRODUCTIONS

Theatrical Entertainment  
Peggy White, Producer  
4528 Cooke St, 55804  
(218) 525-2045  
Reservations (218) 727-4880  
[www.changeofpaceproductions.com](http://www.changeofpaceproductions.com)  
[whitetim@juno.com](mailto:whitetim@juno.com)

Call us for professional fun-raising! Enjoy our current theater production at Midi Dinner Theater in the Fitger's Complex, hire a troupe to perform "Ole & Lena's Wedding" or an Interactive Murder Mystery, or select one of our reasonably priced Musical Entertainment Groups for after dinner entertainment. Call Peggy White, or check out our website to choose a very special event for your group!



#### FITGER'S MUSEUM

600 E Superior St, 55802  
(218) 722-0410  
[www.fitgers.com](http://www.fitgers.com)  
[fitgers@fitgers.com](mailto:fitgers@fitgers.com)

In 1859, Fitger's beer ran so cold a stein had to be heated before the beer could be enjoyed. Today within the bluestone walls of the renovated brewery, discover the Fitger's Museum. See the copper kettle and memorabilia from what was once the most successful brewery in the state. Enjoy a trip back in time to the brewing days. Historic pictures and advertising can be seen in the Fitger's Museum and throughout Fitger's. Shopping, dining and the Historic Fitger's Inn. The charming Fitger's Museum is free. Covered parking and Lakewalk access. Open Mon-Fri/10am-5pm year-round. Admission is free.



### HARTLEY NATURE CENTER

3001 Woodland Ave E, 55803  
(218) 724-6735

[www.hartleynature.org](http://www.hartleynature.org)  
[info@hartleynature.org](mailto:info@hartleynature.org)  
Mon-Fri, 9am-5pm  
Sat, 10am-5pm  
Sun, 12 noon to 5 pm (Jan.-Mar.)

Hartley Nature Center is located in Duluth's 660-acre Hartley Park. A marvel of green building technology, the center serves as a base for a broad range of outdoor activities. There are several public programs including the following large-scale events scheduled for 2012:

- January 28**—Candlelight Ski, Skate & Snowshoe
- April 19**—Wine in the Woods (wine tasting and auction)
- May 5**—Youth Outdoor Expo
- September 22**—Bird Banders Breakfast
- October 27**—Howl-O-Ween

Self-guided opportunities originating at the facility involve hiking the scenic Superior Hiking Trail, informational tours of the green building, and interpretive walks for the butterfly and water gardens. Recreational equipment available for rent includes canoes, cross-country skis and snowshoes. Hartley Park has 3.6 miles of groomed ski trails and ten miles of hiking and mountain biking trails.

### LAKE SUPERIOR HELICOPTERS

Sky Harbor Airport, 55802  
(218) 213-7095  
(866) 896-1637 fax  
[www.lakesuperiorhelicopters.com](http://www.lakesuperiorhelicopters.com)  
[fly@lakesuperiorhelicopters.com](mailto:fly@lakesuperiorhelicopters.com)

Customizable & affordable helicopter tours for all ages. We offer the most unique tours in the Duluth/Superior area that you can find. Being a local company, we take pride in our cities & want to give everyone the opportunity to experience the breathtaking beauty & attraction they have to offer. Allow us to make your dreams take flight today.



### DULUTH ROSE GARDENS

13th Ave E and London Rd, 55805

Overlooking Lake Superior, the formal six-acre garden was originally begun by Mrs. John Klints, a native of Latvia, who wanted to give her adopted home of Duluth a beautiful formal rose garden similar to those she'd known in Europe. It opened in 1965 within Leif Erickson Park, with 2,000 roses all arranged in gently curving beds surrounding an antique horse fountain. Here it remained for 25 years and its splendor won it a "Public Show Garden of America Award." The garden opened in 1994 after four years of construction as part of the new Leif Erickson Park. The six acres are still formal in nature and still have the fountain and gazebo from the original garden. There are now in excess of 3,000 roses and 12,000 non-rose plantings, including day lilies, evergreen shrubs, mixed perennials, and an herb garden. Brick walkways connect all of the beds and there are many benches in the garden that resemble stone sofas on which to rest and admire the garden and view the lake, with its oar barges and bridges.



### TEATRO ZUCCONE

222 E Superior St, 55802 • (218) 336-1414  
[www.3dayweekendmn.com](http://www.3dayweekendmn.com)  
[www.teatrozuccone.com](http://www.teatrozuccone.com)  
[info@teatrozuccone.com](mailto:info@teatrozuccone.com)

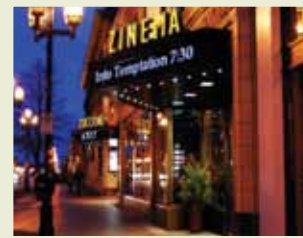
In its commitment to promoting the value of live entertainment, Teatro Zuccone inspires, creates and produces entertainment that's both unique and thought-provoking. Catch a show by Duluth's iconic theater ensemble, Renegade Theatre Company, or live music, comedy, magic, who knows! Call or check online for performance schedule. Admission fee varies per performance.



### TOM'S LOGGING CAMP

5797 North Shore Dr, 55804  
(218) 525-4120  
[www.tomsloggingcamp.com](http://www.tomsloggingcamp.com)  
Just 16 miles from downtown Duluth on Scenic 61

Visit our replicated early logging camp with original equipment. Tour includes 8 museum buildings, gravity house, feeding tame animals and rainbow trout, and a nature trail. The gift shop has a generous jewelry selection, moccasins, pottery gifts and souvenirs. Our sandwich shop roasts our meats, uses fabulous local breads, and has homemade soup and old-fashioned ice cream. Open daily May 1-MEA Weekend in October. \$5/adults; \$4/children (ages 6-15); 5 and under free.



### ZINEMA 2

222 E Superior St, 55802  
(218) 722-7300  
[www.zinema2.com](http://www.zinema2.com)  
[time@zinema2.com](mailto:time@zinema2.com)

Zinema 2 is Duluth's newest movie theater showing the best in first-run movies of all types. Enjoy a glass of wine or a cold beer during the show, not to mention the best popcorn in town. Check for weekend family and children's programming. Call for show times or visit our website. Tickets also available online. Open daily for matinees and evening shows. Adults \$7.50; Seniors/Students \$6.50; Matinees \$6.50; Children \$5.50.



### AREA DIRT TRACKS

[www.proctorspeedway.com](http://www.proctorspeedway.com)  
[www.superiorracetrack.com](http://www.superiorracetrack.com)  
[www.hibbingraceway.com](http://www.hibbingraceway.com)  
[www.abcraceway.com](http://www.abcraceway.com)

The Northland area has numerous excellent dirt track racing facilities. The Proctor Speedway at the St. Louis County Fairgrounds in Proctor has been a popular racing venue for all classes of WISSOTA stock cars, as well as the grass roots Enduro Racing which has grown in popularity in recent years. The Silver 1,000 in late August is one of the most exciting racing events of the year. The Superior Speedway at the Douglas County Fairgrounds has been host to many great dirt track racing events including the Northern Nationals featuring the AMSOIL® Late Model Series and Como Modified Series. The speedway has hosted many bigger events including Outlaw Sprints and the World Dirt Racing League. ABC Raceway is located just south of Ashland to the east of the Twin Ports. On Saturday nights this "field of dreams" erupts into a celebration of dirt track exuberance. Hibbing Raceway is another Saturday night venue with great racing. The Labor Day Shootout is comparable to a mini-Woodstock for fans of racing.

### VETERANS EVERGREEN MEMORIAL HIGHWAY

Along the scenic St. Louis River Duluth, MN

A colorful alternative to I-35, the Veteran's Memorial Highway follows the scenic St. Louis River from Duluth to Askov through Jay Cooke and Banning State Parks. It's a perfect "Sunday Drive" any day of the week.



### FOND DU LAC HERITAGE FESTIVAL

[www.fdlrez.com](http://www.fdlrez.com)

The Fond du Lac Band of Lake Superior Chippewa (also known as Ojibwe or Anishinabe) is strongly committed to preserving our rich heritage. Native languages and customs are taught in our classrooms. Wild rice and maple syrup have been harvested the same way for hundreds of years. Traditional stories and dances are handed down to future generations, and when we gather, we recognize that the past is still with us. The Fond du Lac reservation hosts two powwows during the summer months: the Veterans Powwow and the Mash-ka-Wisen Powwow. Enjoy traditional foods, song and dance. Learn more about our history with a visit to our Cultural Center, Museum and Veterans Park. The museum houses many fascinating artifacts, photographs and clothing; and the park is a place to remember those who have served or are serving our country as members of the armed forces. We also offer world-class gaming at two of our casinos: Fond-du-Luth in downtown Duluth, and the Black Bear Casino Resort off I-35 in Carlton. For more information, visit us at [www.fdlrez.com](http://www.fdlrez.com).



### ART IN THE ALLEY GALLERY & BOUTIQUE

912 Hammond Avenue & 1323 Broadway, Superior, WI 54880  
(218) 591-1698  
[www.artinthealley.com](http://www.artinthealley.com)  
[info@artinthealley.com](mailto:info@artinthealley.com)

Both the gallery and boutique are located in the 120-year-old historical Trade and Commerce Marketplace, the original government center for the city of Superior. The shops are owned by the husband and wife art team Tami LaPole Edmunds and Dan Edmunds. Dan is a potter and glass artist, and Tami designs clothing & jewelry. The historical building is a perfect backdrop for the eclectic gallery that hosts over 50 local artists, has its own Bead Store and Classroom, so you can come and create it yourself. Open Mon-Sat 10-6.

### CAPTAIN J'S MINIATURE GOLF

333 Marina Dr  
Superior, WI 54880  
(715) 394-4450  
[www.captainjsminigolf.com](http://www.captainjsminigolf.com)

Located on historic Barker's Island, the Captain invites you to enjoy 18 holes of family friendly fun. Captain J's is nestled next to the S.S. Meteor whaleback ship. Open daily Memorial Day through Labor Day, 10am-9pm. Birthday party and group rates available.



### FAIRLAWN MANSION

*"One of America's Castles"*  
906 E Second St, Superior, WI 54880  
Across from Barker's Island  
(715) 394-5712  
[www.superiorpublicmuseums.org](http://www.superiorpublicmuseums.org)  
[info@superiorpublicmuseums.org](mailto:info@superiorpublicmuseums.org)

Fairlawn was built in 1890 as the family estate of Martin Pattison, lumber and mining millionaire and 3-term mayor of Superior. This 42-room mansion recalls Superior's boomtown days, as well as its unique, 40-year history as a Children's Home. Today's visitors will be impressed by the fully restored exterior and main floor rooms, with exotic woodwork, lush fabrics and spectacular, hand-painted ceilings. Open year-round. \$8 for adults; \$6.50 for seniors and students; children 5 and under free.

### DOUGLAS COUNTY HISTORICAL SOCIETY

1101 John Ave, Superior, WI 54880  
(715) 392-8449  
[www.douglashistory.org](http://www.douglashistory.org)  
[dchs@douglashistory.org](mailto:dchs@douglashistory.org)

Learn about local history by experiencing it through live theatre. Original plays based on local history are performed on stage at DCHS. The 1943 USO Canteen radio show with live swing music is a popular annual event. Visit our website for more information about the USO and about our upcoming History Theatre season. Society offices open Tues-Thurs, 11am to 5pm. \$10 advance tickets; \$12 at the door.



### SS METEOR MARITIME MUSEUM

300 Marina Dr, 54880  
(715) 394-5712  
[www.superiorpublicmuseums.org](http://www.superiorpublicmuseums.org)  
[info@superiorpublicmuseums.org](mailto:info@superiorpublicmuseums.org)

The last of the whalebacks! Launched right here in the Twin Ports in 1896 and designed by local inventor Captain Alexander McDougall, this uniquely shaped ship carried a variety of cargos on the Great Lakes until the 1970s. The tour takes you through the pilothouse, crews' quarters and engine room, housing the original and impressive turn of the century triple expansion steam engine. Located on Barker's Island.

Open mid-May through mid-Oct. Call for tour times.

\$6 adults, \$5 students/seniors; children 5 and under are free.

### BIG TOP CHAUTAUQUA

3 miles South of Bayfield, WI  
at the top of Ski Hill Rd  
(888) 244-8368  
[www.bigtop.org](http://www.bigtop.org) • [info@bigtop.org](mailto:info@bigtop.org)

Visit Lake Superior's Big Top Chautauqua three miles south of Bayfield, WI at the foot of Mt. Ashwabay. Known as the "Carnegie Hall of tent shows," our 50+ seasonal lineup features original productions, international touring acts, concerts, and variety shows all presented in a picturesque setting under a giant 900-seat, all-canvas tent theater. Performance home of nationally distributed Tent Show Radio program. Food, bar, gardens & gift shop. Suitable for the whole family. Season runs mid-June through early Sept. Free shuttle from Bayfield, Washburn and Ashland. Admission: Varies. For complete information visit our website at [www.bigtop.org](http://www.bigtop.org) or call (888) 244-8368. A non-profit performing arts organization since 1986.



### MADLINE ISLAND FERRY LINE

100 Main Street  
LaPointe, WI 54850  
(715) 747-2051  
[www.madferry.com](http://www.madferry.com)  
[ferryinfo@madferry.com](mailto:ferryinfo@madferry.com)

Walk, bike or drive on board! Just 90 minutes from Duluth, enjoy the beautiful Lake Superior scenery and the magnificent beaches on Madeline Island. Connecting Bayfield and the Island, our ferries cross the 2.5-mile channel in 25 minutes and offer spectacular views of the Apostle Islands. Relax and let the magic of Lake Superior weave its spell. Operating season is April through mid-Jan, with trips running every 1/2 hour during the summer months.



### SUPERIOR HIKING TRAIL

PO Box 4, 731 Seventh Ave.  
Two Harbors, MN 55616  
(218) 834-2700  
[www.shta.org](http://www.shta.org) • [hike@shta.org](mailto:hike@shta.org)

Accept the challenge of hiking some of the most rugged and picturesque trails in the Midwest. The Superior Hiking Trail presents over 277 miles of gorgeous views, towering waterfalls and hidden river valleys. Camp at any of the many designated areas, or spend a night in a cozy northern resort. This trail is one of the ten best in the United States according to *Backpacker* magazine. Visit our website: [www.shta.org](http://www.shta.org) or call (218) 834-2700. All year: Mon-Fri/9am-4:30pm; May 15-Oct 15: Sat/10am-4pm; Sun/Noon-4pm.



### JUDY GARLAND MUSEUM & HISTORIC HOME

PO Box 724, 2727 US Hwy 169 S  
Grand Rapids, MN 55744  
(800) 664-5839; (218) 327-9276  
[judygarlandmuseum.com](http://judygarlandmuseum.com)  
[jgarland@uslink.net](mailto:jgarland@uslink.net)

Tour the restored 1925 historic home where America's Treasure, Judy Garland, spent her formative years. At the adjacent Museum, see the carriage used in the Wizard of Oz, once owned by Abraham Lincoln. Enjoy a performance or documentary screening. Memorial Garden with Gazebo. Shop in Professor Marvel's store. Open daily Memorial Day weekend through Sept. April & May open Mon - Sat. Call for late autumn & winter hours. General admission for all ages—\$8. One Campus—Many Attractions (includes Children's Discovery Museum). Under age 1-free. **37th Annual Judy Garland Festival June 14-16.**

### CHILDREN'S DISCOVERY MUSEUM

(866) 236-5437; (218) 326-1900  
[www.cdmkids.org](http://www.cdmkids.org)  
[office@cdmkids.org](mailto:office@cdmkids.org)

Learn while you play. Discover dinosaurs at "dino-dig." Meet "Treesa," the Talking Tree. Pilot your boats on the River Water Table. Explore Rivertown, a child-size village. Demonstrate an earthquake at Geo-zoooom. Crawl around at the Tot Park Maze. Fairyland: A collection of 200 classic fairytale dolls. Shop in Professor Marvel's store. Open daily Memorial Day weekend through Sept. April & May open Mon - Sat. Call for late autumn & winter hours. General admission for all ages—\$8 One Campus—Many Attractions (includes Judy Garland Museum and Historic Home). Under age 1-free.



### GIANTS RIDGE GOLF & SKI RESORT

60 minutes north of Duluth  
in the heart of northeastern  
Minnesota's Iron Trail  
6325 Wynne Creek Drive  
Biwabik, MN 55708  
(800) 688-7669  
Fax: (218) 865-8000  
[www.giantsridge.com](http://www.giantsridge.com)  
[info@giantsridge.com](mailto:info@giantsridge.com)

Giants Ridge is the Midwest's #1 four-season family resort destination. Rated as Minnesota's #1 Ski Resort (*Ski Magazine*). Giants Ridge offers 35 downhill runs, more than 60km of cross-country ski trails, ski-in/ski-out accommodations, access to more than 2,000 miles of snowmobile trails, one of Minnesota's largest terrain parks and snow tubing. Combine those features with a quality product & first-class customer service that goes above and beyond, you'll want to visit us again and again. The Legend and The Quarry at Giants Ridge offer 36 holes of the Midwest's greatest golf. Both are listed in *Golf Digest's* America's 100 Greatest Public Courses. The Quarry is ranked #1 in Minnesota and The Legend is ranked #4. Both courses also received a 4.5 star listing from *Golf Digest*. No matter what time of year you visit, we've got miles of year-round recreation trails, lake access, unbeatable lodging accommodations, dining, shopping, and much more. Call (800) 688-7669 for rates and hours of operation.



### SPLIT ROCK LIGHTHOUSE

3713 Split Rock Lighthouse Road  
45 miles N of Duluth on MN Hwy 61  
(218) 226-6372  
[www.mnhs.org/splitrock](http://www.mnhs.org/splitrock)  
[splitrock@mnhs.org](mailto:splitrock@mnhs.org)

Split Rock is a "must-see" attraction for travelers to the Minnesota North Shore. It is one of America's best-preserved and most recognized lighthouses. Tours are offered daily in summer and the Visitor Center offers displays, a film in the Theater and shopping in the Museum Store. May 15-Oct 15, Daily 10am-6pm; Oct 16-May 14, Thurs-Mon 11am-4pm (visitor center/store only); \$9 Adults, \$7 Seniors (65+), \$6 children 6-17.



### MINNESOTA HISTORICAL SOCIETY NORTH WEST COMPANY FUR POST

Come visit your place in history.  
12551 Voyageur Lane  
Pine City, MN 55063  
(320) 629-6356 • [nwcfurpost@mnhs.org](mailto:nwcfurpost@mnhs.org)  
[www.mnhs.org/nwcfurpost](http://www.mnhs.org/nwcfurpost)

Visit the reconstructed North West Company wintering post on the Snake River. The original wintering post was built in 1804. A 40-minute guided tour of the post and Ojibwe encampment leaves the visitor center every half hour. Last tour begins at 4pm daily. Exhibits in the visitor center explore the greater fur trade story. Memorial Day-Labor Day: 10am-5pm/Thurs-Sat & Mon; Noon-5pm/Sun. \$9/adults; \$7/seniors; \$6/children 6-17; free for children 5 & under. Handicap accessible.